



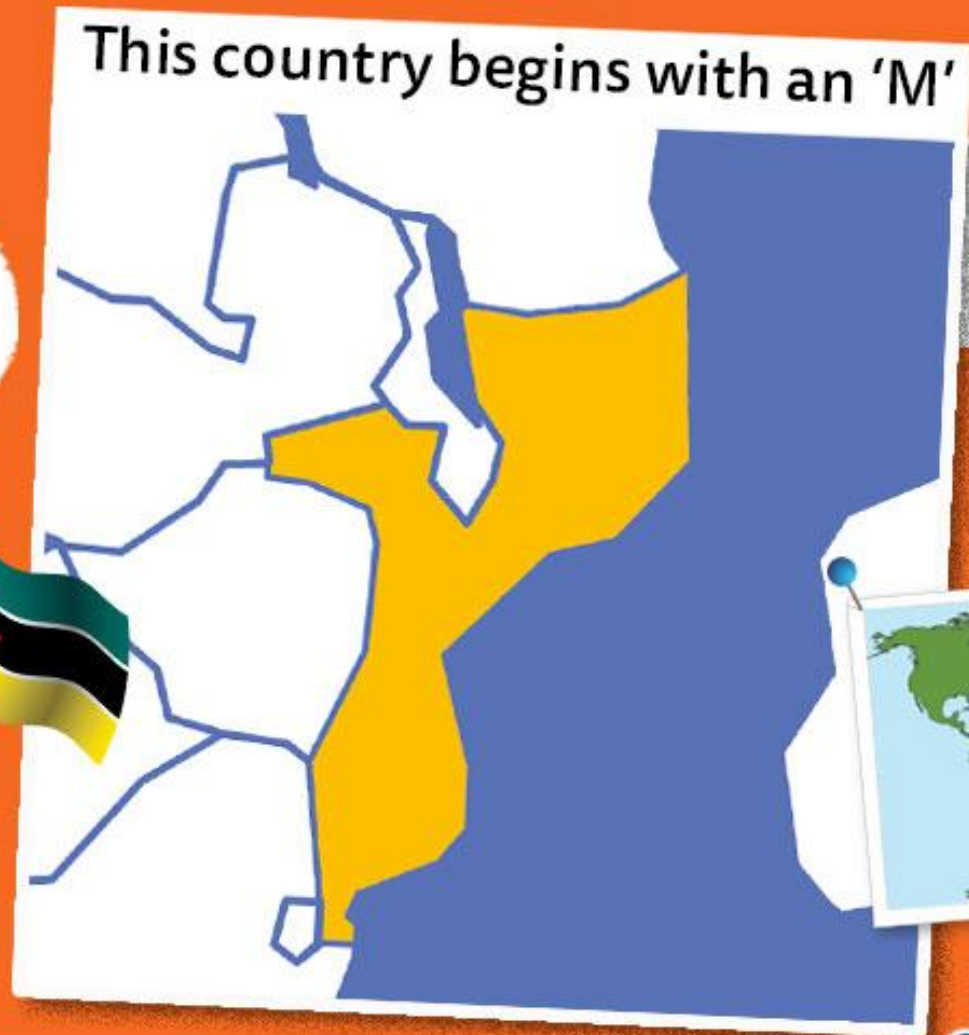
**The world this week**  
**Record breaking ruby**

# Where are we this week?

This country begins with an 'M'

Its national animal is an elephant!

It's in Africa, near Tanzania.



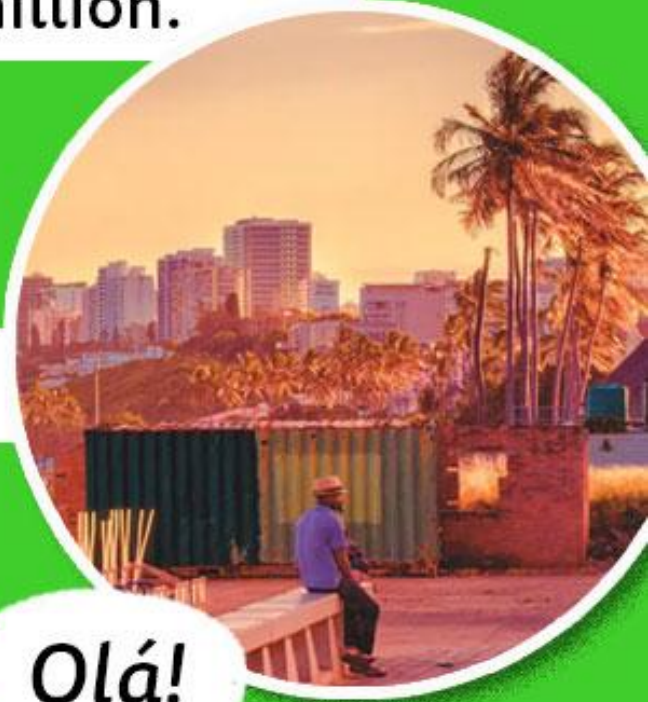
# It is Mozambique!

It has a long coastline on the Indian Ocean and a population of 33.8 million.

Its capital city is Maputo

UTC +2 hours

Olá!



# Why is Mozambique in the news?

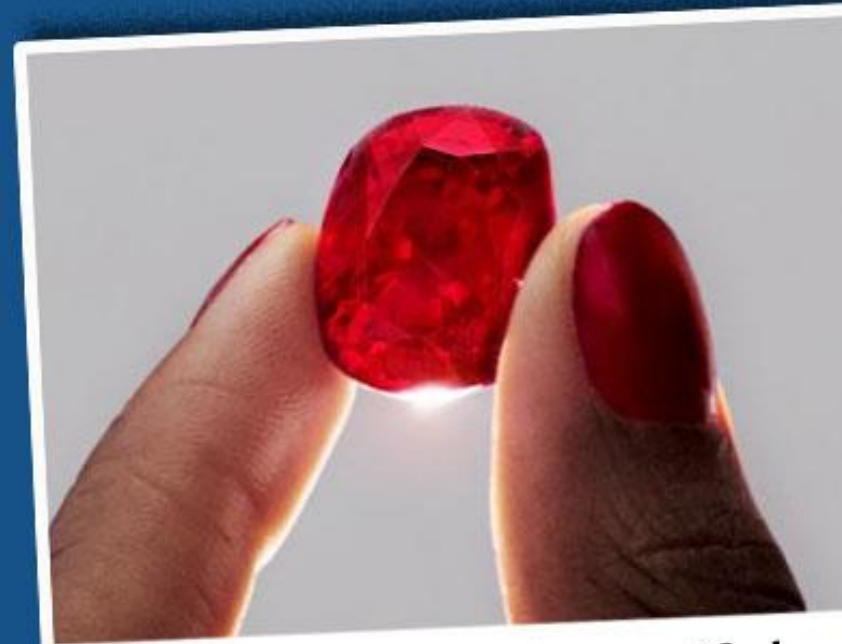
Because the biggest ruby ever to come to an auction was just sold...



...for a record price of  
£27.5 million!

**Rubies of such size and quality are incredibly rare! This gem was found in a mine in Mozambique last year.**

*It was carefully cut and polished into a symmetrical shape...*



*...to show off its beautiful colour and clarity!*

# Over to you!

Using the world map, where is Mozambique in relation to the Tropics and Equator? What do you think the climate is like?



Do you know any facts about Mozambique?



Are gems worth all the hard work it takes to find them?



# Over to you!

Why do people value things like gems or gold so much? What is more valuable or important for you?



***Thank you!***

***We'll see you next week for your new  
"The World This Week" resource!***

If you would like to explore how Oddizzi could support the teaching and learning of geography in your primary school please contact [admin@oddizzi.com](mailto:admin@oddizzi.com). Oddizzi is offering a 20% discount on your first 12 month subscription (2022 price is £150.00 VAT) please quote the code **THEDAY2022** in your email.