



The world this week
Lost city

Where are we this week?

This country begins with an 'M'

It's in North America,
near the USA.

Its national
animal is a
golden eagle!



It is Mexico!

It's between the Atlantic and the Pacific Oceans and its population is 133 million.

Its capital is Mexico City.

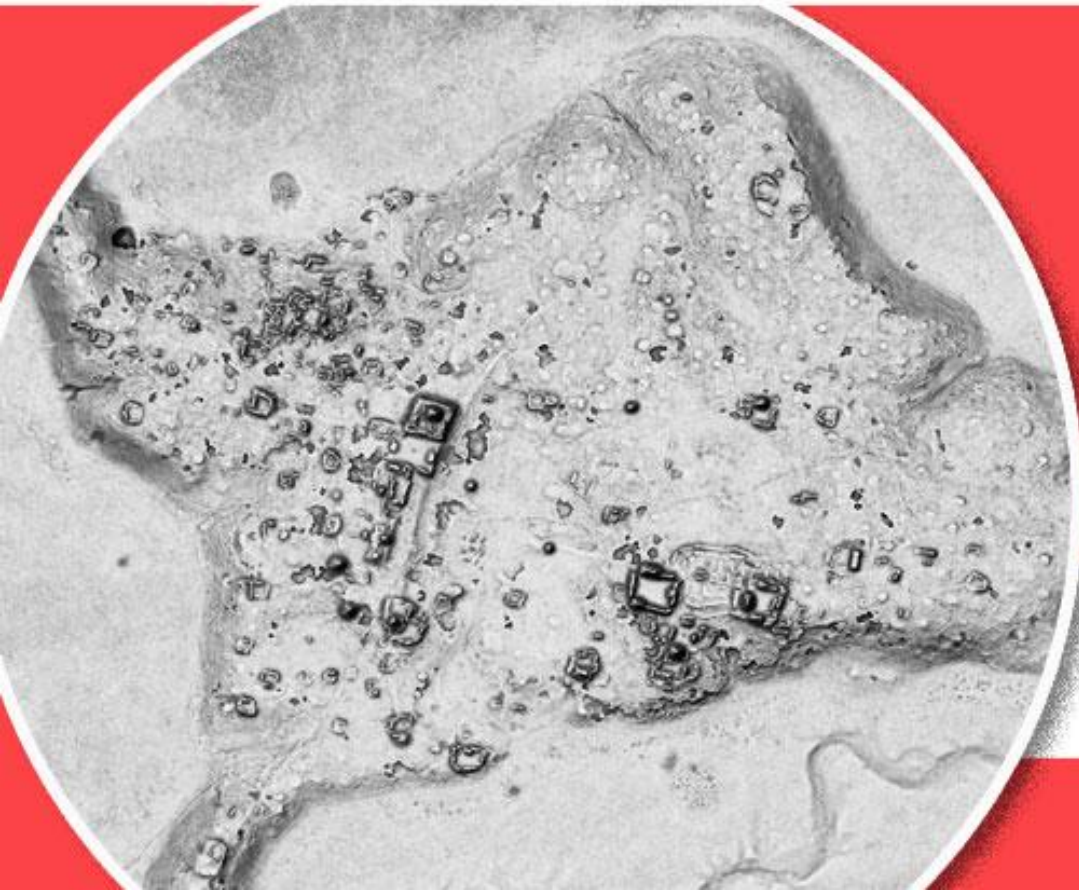
UTC -5 to -7 hours

Hola!



Why is Mexico in the news?

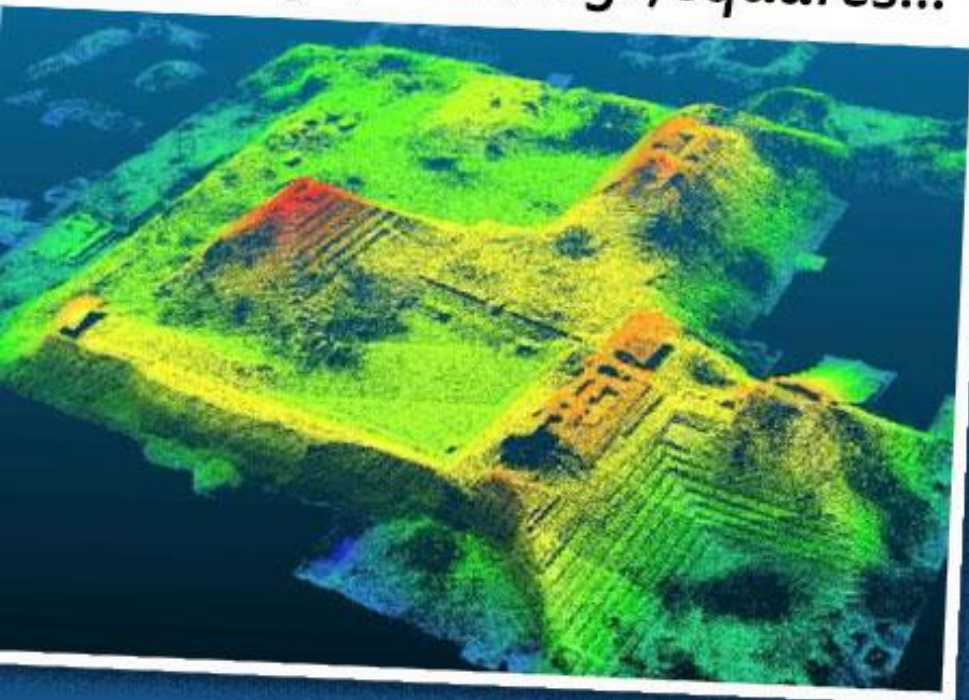
Because ruins of an ancient Mayan city were discovered deep in the jungle...



...using a laser mapping technology!

The city of Ocomtun was abandoned over 1,000 years ago. Scientists scanned the jungle with a laser device to find its ruins.

It had pyramid-like structures up to 15m high, buildings, squares...



...stone columns and even ball game courts!

Over to you!

Using the world map, where is Mexico in relation to the Tropics and Equator? What do you think the climate is like?



Do you know any facts about Mexico?

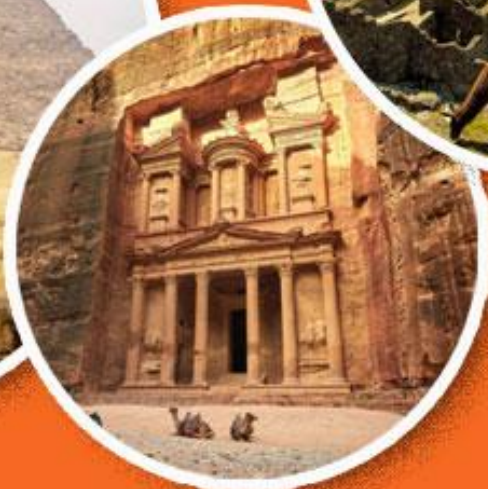


Is looking for ancient cities a waste of time? Why/why not?



Over to you!

Which other ancient civilisations do you know of? How do you think their everyday lives were different to yours?



Thank you!

***We'll see you next week for your new
"The World This Week" resource!***

If you would like to explore how Oddizzi could support the teaching and learning of geography in your primary school please contact admin@oddizzi.com. Oddizzi is offering a 20% discount on your first 12 month subscription (2022 price is £150.00 VAT) please quote the code **THEDAY2022** in your email.