



**The world this week**  
**A perfect school**

# Where are we this week?

This country begins with an 'S'

It's in Europe,  
near Portugal.

Its national  
animal is a bull!



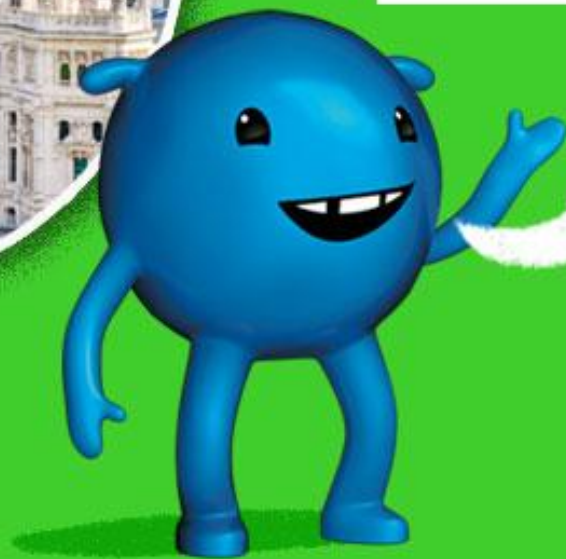
# It is Spain!

It's a kingdom on the Mediterranean Sea with a population of 47 million.

Its capital city is Madrid.

UTC +1 hour

Hola!



# Why is Spain in the news?

Because an unusual school building has just opened its doors near Madrid...



...designed with the help of its pupils!

**The architect asked children what they wanted the school to be like, and it was built with their ideas in mind.**

*The result: walls covered with cork, porthole windows, zig-zagging roofs, big archways...*



*...and classrooms arranged around an indoor rainforest full of plants and wildlife!*

# Over to you!

Using the world map, where is Spain in relation to the Tropics and Equator? What do you think the climate is like?



Do you know any facts about Spain?



Is it important where you study? Why/why not?

# Over to you!

Describe or draw your dream school!  
Where would it be? What would it look like?  
Which materials would it be built with?



***Thank you!***

***We'll see you next week for your new  
"The World This Week" resource!***

If you would like to explore how Oddizzi could support the teaching and learning of geography in your primary school please contact [admin@oddizzi.com](mailto:admin@oddizzi.com). Oddizzi is offering a 20% discount on your first 12 month subscription (2022 price is £150.00 VAT) please quote the code **THEDAY2022** in your email.