

A microscopic image of a fungus, likely a white rot fungus, showing a central cluster of spores and surrounding hyphae. The background is a warm, orange-brown color.

The world this week
Plastic-eating fungus

Where are we this week?



Its national animal is a kangaroo!



This country begins with an 'A'



It's in Oceania,
near Indonesia.



It is Australia!

It's an island country in the Southern hemisphere with a population of 25.7 million.

Its capital city is Canberra.

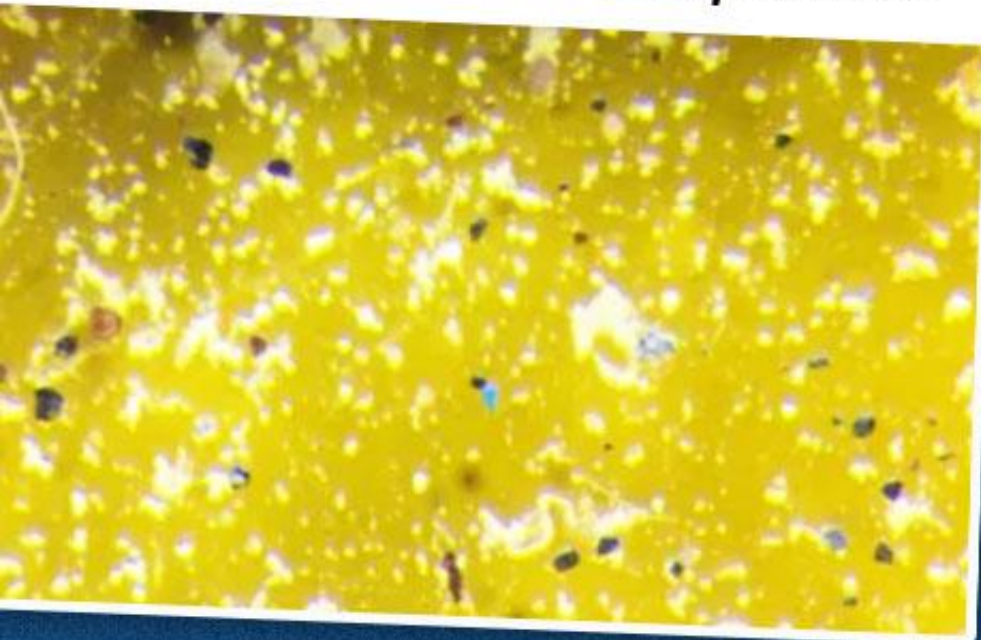
UTC +8 to +10 hours

Hello!



**We produce and waste a lot of plastic:
toys, bottles, packaging, household items...
It takes hundreds of years to break down!**

*But the new plastic-eating fungus
breaks it down so much quicker...*



*...it could be a great way to
get rid of our plastic waste!*

Over to you!

Using the world map, where is Australia in relation to the Tropics and Equator? What do you think the climate is like?



Do you know any facts about Australia?



Should plastic be banned altogether? Why/why not?

Over to you!

What else can we do to reduce the amount of plastic in the world?



Thank you!

***We'll see you next week for your new
"The World This Week" resource!***

If you would like to explore how Oddizzi could support the teaching and learning of geography in your primary school please contact admin@oddizzi.com. Oddizzi is offering a 20% discount on your first 12 month subscription (2022 price is £150.00 VAT) please quote the code **THEDAY2022** in your email.